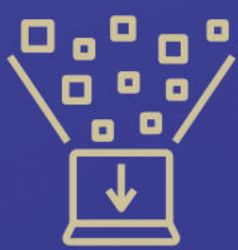


# Unlocking the full value of scientific experiments

## LabDeep

Our AI-based platform brings unpublished, high-quality experiments to light, improving research efficiency, cutting R&D costs, and accelerating innovation in life sciences.

LabDeep innovates in three key areas:



### Data collection

Submission in less than one hour with our AI-guided platform. Earn rewards or access for your contributions.



### Data curation

The future of quality control: AI checks for accuracy, authenticity, and reusability. Say goodbye to peer review bottlenecks.



### Data presentation

Your AI research companion is here. Discover precise evidence, no matter how specific, and interact seamlessly using natural language.



Team: Catharina Sanger, Natalja Travanov, Enea Motta, Negin Ghamsarian, Farrokh Tarpoudi Baheri

Contact: [casa.labdeep@gmail.com](mailto:casa.labdeep@gmail.com)

**STARTUP  
CAMPUS**



TECHNOPARK  
ZÜRICH

ETH ENTREPRENEUR CLUB

Empa  
Material Science and Technology

hdk  
Zürcher Hochschule für Angewandte Wissenschaften

zhaw

SWITZERLAND  
INNOVATION  
POLICY

SWITZERLAND  
INNOVATION  
POLICY

EPFL

ETH  
Entrepreneur  
Alumni

Unil  
UNIVERSITÉ DE LAUSANNE  
HEC LAUSANNE

TECHNOPARK  
WINTERTHUR

EP  
FL  
Innovation  
Park

ETH ENTREPRENEURSHIP

SWISS  
HUB  
Switzerland

FH  
GR  
Fachhochschule Graubünden  
University of Applied Sciences

OST  
University of Applied Sciences

UNIVERSITÉ  
DE GENÈVE

u  
b  
UNIVERSITÄT  
BASEL

swisspreneur

University of St. Gallen

FOUNDERS  
HIVE

HUB  
ZÜRICH

Zürcher  
Kantonalbank

