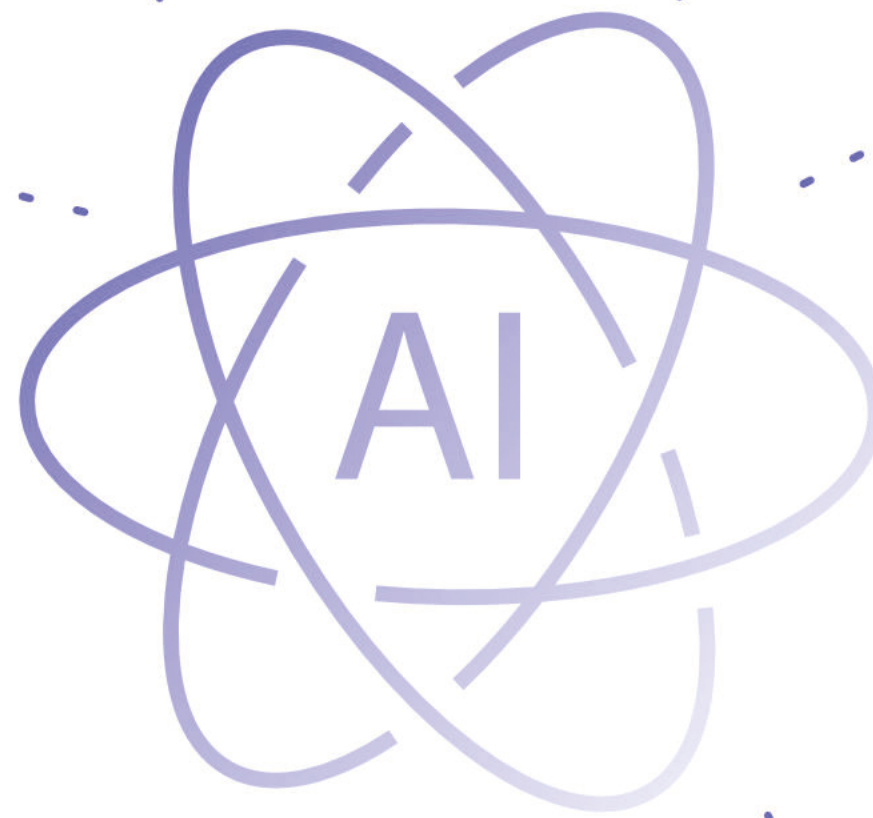




AI Food Matchmaking: Connecting Every Guest to Their Perfect Dish

One-Third of Restaurant Customers Are
Lost Revenue. We Transform Dietary
Restrictions into Revenue Opportunities



Restaurant chains and
large restaurants improve
guest satisfaction while
creating an inclusive dining
experience

Eatomics unlocks revenue
from one-third of guests
with dietary needs who
currently avoid restaurants
or order less

Smart AI **matchmaking**
between guests and
restaurants, creating
personalized menu offerings
based on preferences and
restrictions



Team: Himanshu Joshi, Andzej Gedzo, Kuzmanovic Damjan, Gonçalo Martins Enes, Carmine Cristinzio, Luca Hagenmayer

Contact: luca@eatomics.com

**STARTUP
CAMPUS**



TECHNOPARK
ZÜRICH



ETH ENTREPRENEUR CLUB

Empa

Fachhochschule Graubünden
University of Applied Sciences

z hdk

OST

University of Zurich

zhaw

UNIVERSITÉ DE GENEVE

SWITZERLAND INNOVATION

SWITZERLAND INNOVATION

u

EPFL

Kanton Zürich

swisspreneur

ETH

University of Basel

University of St. Gallen

Umi

digitalswitzerland

FOUNDERS HIVE

TECHNOPARK
WINTERTHUR

SICTIC

HUB Zürich

EP
FL
Innovation
Park

ETH ENTREPRENEURSHIP

Zürcher
Kantonalbank

ETH ENTREPRENEURSHIP

swissnex

powered by
Innosuisse

