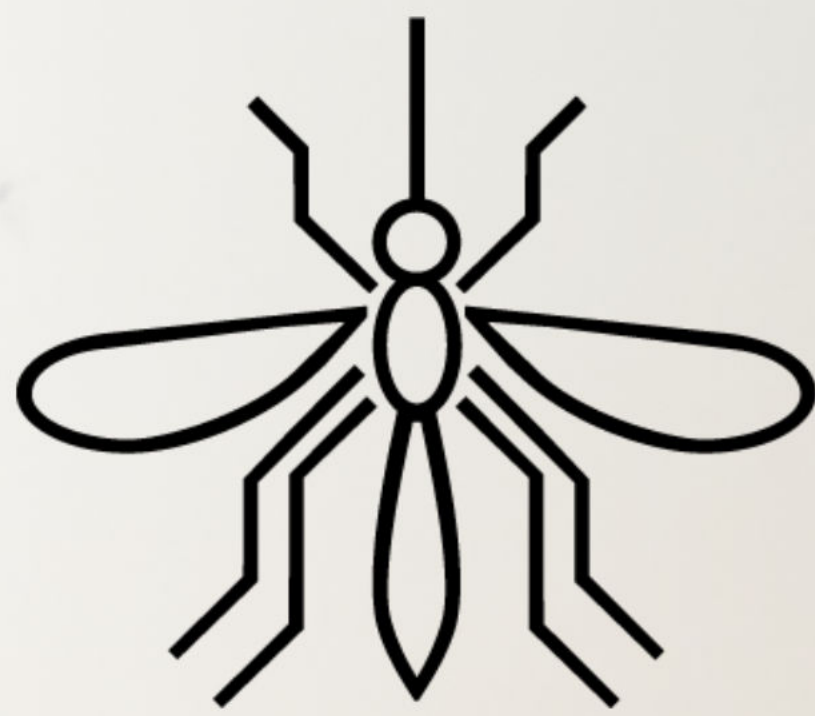




# PROTECTING COMMUNITIES, PRESERVING BIODIVERSITY

Effectively Reducing the  
Risk of Mosquito-Borne  
Diseases in Urban Areas.

**Stop Aedes  
Albopictus**  
Product as a  
Service



**Sustainable Trap**  
designed for long-term,  
eco-friendly mosquito  
control

**Seamless Integration**  
with existing public  
infrastructure

**Selective and Non-Toxic**  
safe for humans, pets,  
and the environment

**Provides Data**  
for monitoring and  
research



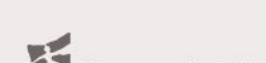
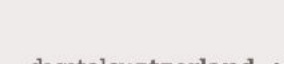
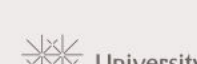
**Team:** Meret Jans, Florian Karb, Michael Suter, Mohan Adluru, Victoria Shavina

**Contact:** [meret.jans@gmail.com](mailto:meret.jans@gmail.com)

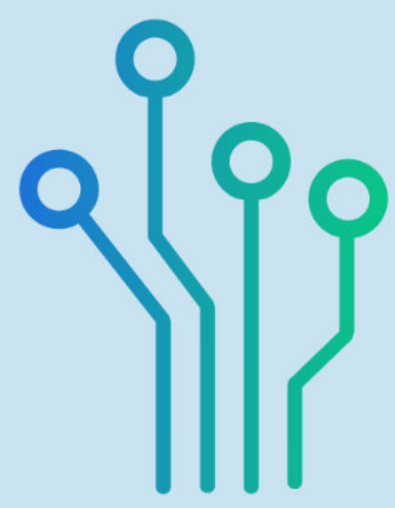
**STARTUP  
CAMPUS**



ETH ENTREPRENEUR CLUB







InnoThunder GmbH

# Revolutionizing Safety in Paragliding

## Active Safety for any Paraglider

Universally Compatible Device  
Paired with Safety App



Data  
Analysis  
Platform



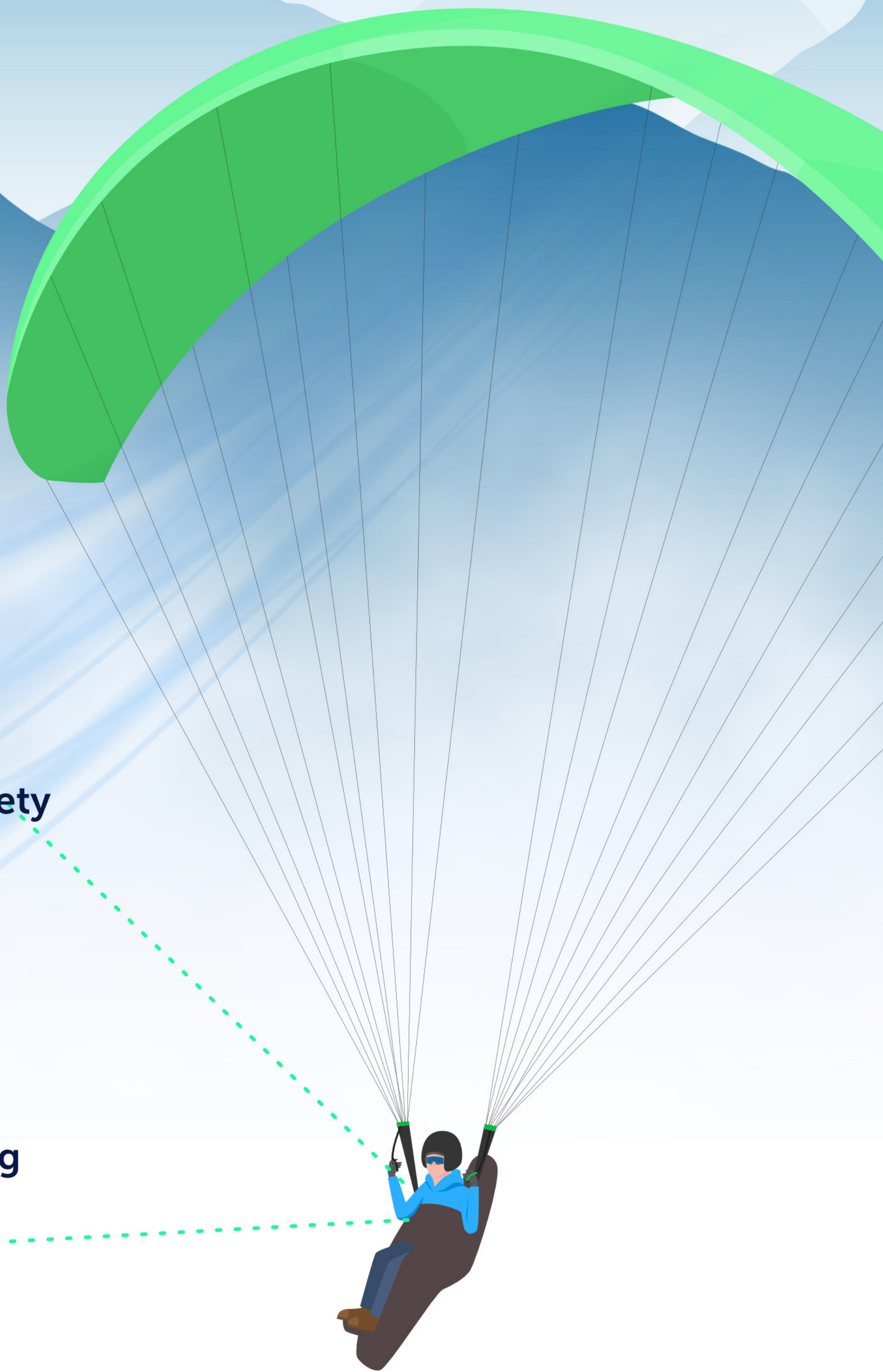
Modern Safety  
Culture



Advanced  
Prediction of Wing  
Collapses



Glide Performance  
Optimization



## Scientific Recognition



SCHWEIZER JUGEND FORSCHT  
SCIENCE ET JEUNESSE  
SCIENZA E GIOVENTÙ



EU Contest for  
Young Scientists  
Katowice 2024

Team: Alyssa Atorino, Afshin Khosroshahi, Giuseppe Cianci, Zino Zischek, Lewin Gerber, Nicolas Huber

Contact: [nicolas@innothunder.ch](mailto:nicolas@innothunder.ch)



ETH ENTREPRENEUR CLUB



EPFL

ETH



TECHNOPARK®

EPFL

ETH ENTREPRENEURSHIP

TECHNOPARK®

Empa

hdk

zhaw

SWITZERLAND INNOVATION

Kanton Zürich

University of Basel

digitalswitzerland

SICTIC

swissnex

Switzerland

Fachhochschule Graubünden

OST

UNIVERSITÉ DE GENÈVE

u<sup>b</sup>

swisspreneur

University of St. Gallen

FOUNDERS HIVE

Zürich

Zürcher Kantonalbank



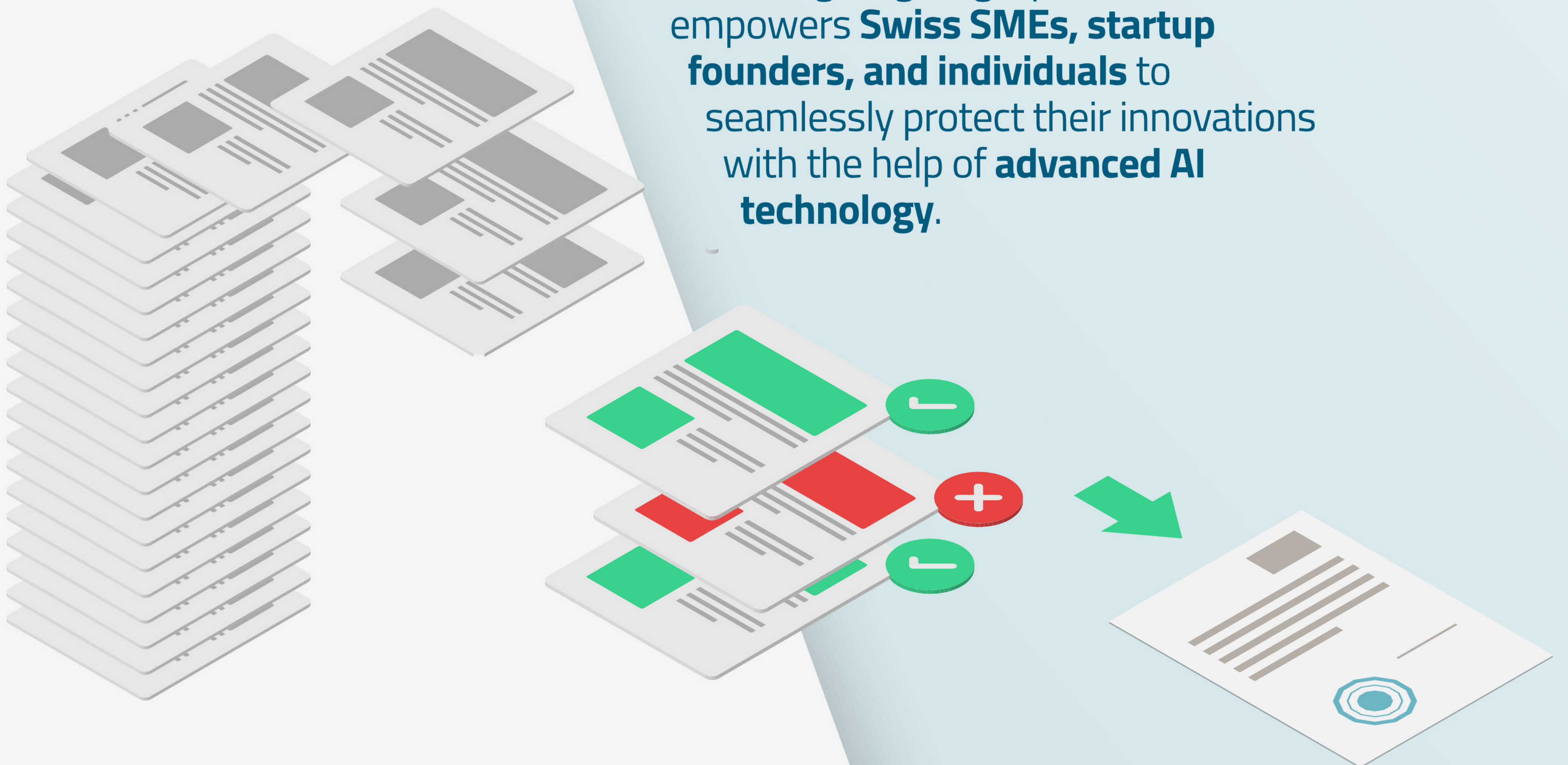


# Simplify Your Patent Journey with InnovationGuard



## AI-powered Legal Insights for Swiss SMEs, Startups, and Innovator

Navigating the patent application process has never been easier. **InnovationGuard** is a cutting-edge legal platform that empowers **Swiss SMEs, startup founders, and individuals** to seamlessly protect their innovations with the help of **advanced AI technology**.



### Personalized Legal Insights

Get expert guidance at every step of your patent filing.

### Tailored Documents

Create patent-related paperwork effortlessly with customizable templates.

### Interactive Checklists

Stay on track and ensure all requirements are met.

### Real-time Risk Updates

Stay ahead with updates on potential risks during the application process.

### Potential Market Value Evaluation System

Assess the economic potential of your innovation with AI-driven market insights.

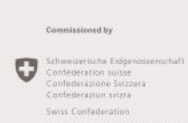
**InnovationGuard** combines all these tools into one user-friendly platform, making patent filings efficient, reliable, and secure.

## Start Simplifying Your Patent Process Today!

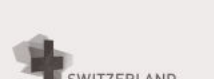
Team: Zhiyun Zhou, Bartu Avci, Andrii Pokrovskyi, Timur Taepov

Contact: [innovationguardch@gmail.com](mailto:innovationguardch@gmail.com)

**STARTUP  
CAMPUS**



ETH ENTREPRENEUR CLUB



EPFL

ETH



TECHNOPARK®

EP Innovation Park

ETH ENTREPRENEURSHIP

TECHNOPARK® ZÜRICH

Empa

hdk

zhaw



Kanton Zürich

University of Basel

digitalswitzerland

SICTIC



swissnex

Switzerland

Fachhochschule Graubünden

OST

UNIVERSITÉ DE GENEVE

u

swisspreneur

University of St. Gallen

FOUNDERS HIVE

HUB Zürich

Zürcher Kantonalbank



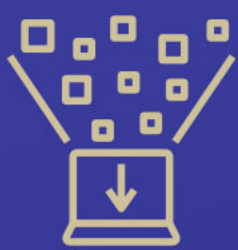


# Unlocking the full value of scientific experiments

## LabDeep

Our AI-based platform brings unpublished, high-quality experiments to light, improving research efficiency, cutting R&D costs, and accelerating innovation in life sciences.

LabDeep innovates in three key areas:



### Data collection

Submission in less than one hour with our AI-guided platform. Earn rewards or access for your contributions.



### Data curation

The future of quality control: AI checks for accuracy, authenticity, and reusability. Say goodbye to peer review bottlenecks.



### Data presentation

Your AI research companion is here. Discover precise evidence, no matter how specific, and interact seamlessly using natural language.



Team: Catharina Snger, Natalja Travanov, Enea Motta, Negin Ghamsarian, Farrokh Tarpoudi Baheri

Contact: [casa.labdeep@gmail.com](mailto:casa.labdeep@gmail.com)

**STARTUP  
CAMPUS**



TECHNOPARK  
ZÜRICH

ETH ENTREPRENEUR CLUB

Empa  
Material Science and Technology

hdk  
Zürcher Hochschule für Angewandte Wissenschaften

zhaw

SWITZERLAND  
INNOVATION  
PROMOTION

University of Zurich

EPFL

ETH  
Entrepreneur  
Alumni

Unil  
UNIVERSITÉ DE LAUSANNE  
HEC LAUSANNE

TECHNOPARK  
WINTERTHUR

EP  
FL  
Innovation  
Park

ETH ENTREPRENEURSHIP

SWISS  
HUB  
Switzerland

FH  
GR  
Fachhochschule Graubünden  
University of Applied Sciences

OST  
University of Applied Sciences

UNIVERSITÉ  
DE GENÈVE

u  
b  
University of Basel

swisspreneur

University of St. Gallen

FOUNDERS  
HIVE

HUB  
ZÜRICH

Zürcher  
Kantonalbank







Data by the Book

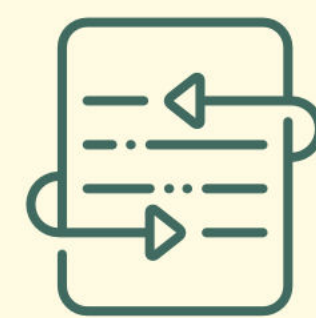
# Compliance Copilot

Streamline compliance workflows with AI driven automation. Reduce risks.



## Cost-effective delivery

AI reduces operational expenses by automating tasks and optimizing resource allocation



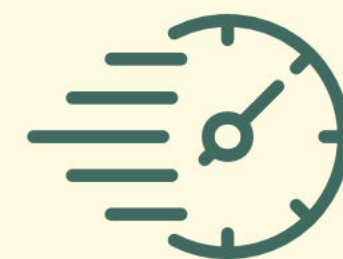
## Automated compliance updates

They ensure real-time adjustments to regulatory changes, minimizing compliance risks



## High robustness

AI-driven automation improves system reliability by reducing errors.



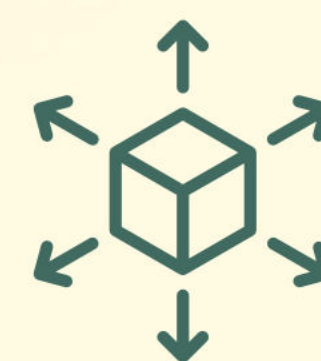
## Faster delivery times

Streamlining workflows allows for quicker execution and more efficient service delivery



## Higher satisfaction rate

AI-driven optimizations enhance user experience by providing faster and more accurate solutions



## Scalability & adaptability

AI agents enable seamless growth by flexibly adapting to changing business needs

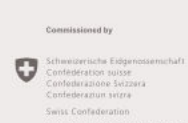
We believe compliance is a long-standing industry challenge, but when done right, it builds customer trust and strengthens the talent pool

[databythebook.com](https://databythebook.com)

Team: Helena Peic Tukuljac, Enrique Zbinden, Irini Karavouzis, Jon Defilla, Jeanette Gautschi, Cenet Collins, Feray Gürocak

Contact: [hello@databythebook.com](mailto:hello@databythebook.com)

STARTUP  
CAMPUS



ETH ENTREPRENEUR CLUB



EPFL

ETH



TECHNOPARK®

EP Innovation Park

ETH ENTREPRENEURSHIP

TECHNOPARK® ZÜRICH

Empa

z hdk

zhaw

SWITZERLAND INNOVATION

Kanton Zürich

University of Basel

digitalswitzerland

SICTIC

UZH

SWISSNEX

SWITZERLAND

Fachhochschule Graubünden

OST

UNIVERSITÉ DE GENÈVE

u

swisspreneur

University of St. Gallen

FOUNDERS HIVE

HUB Zürich

Zürcher Kantonalbank



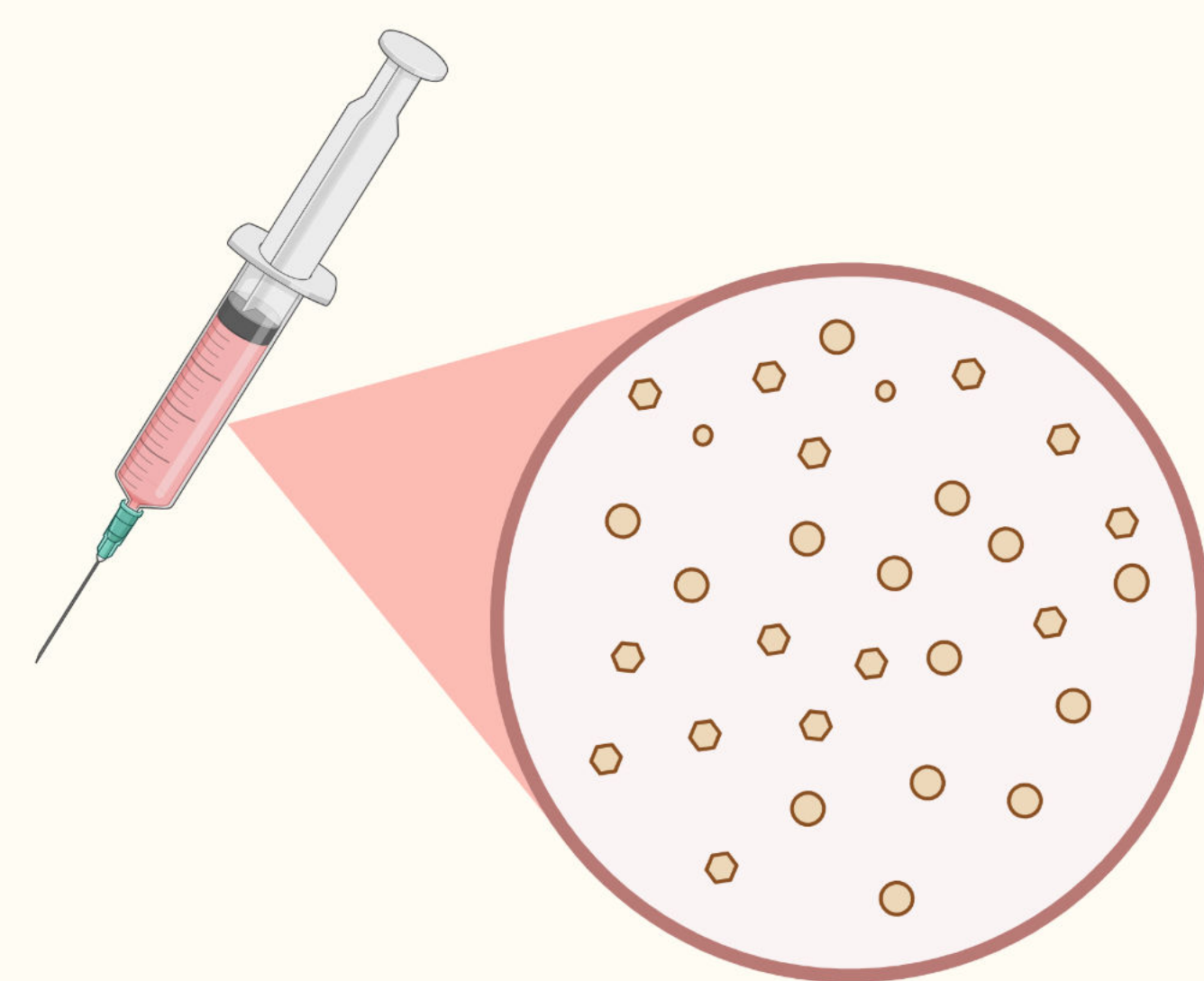
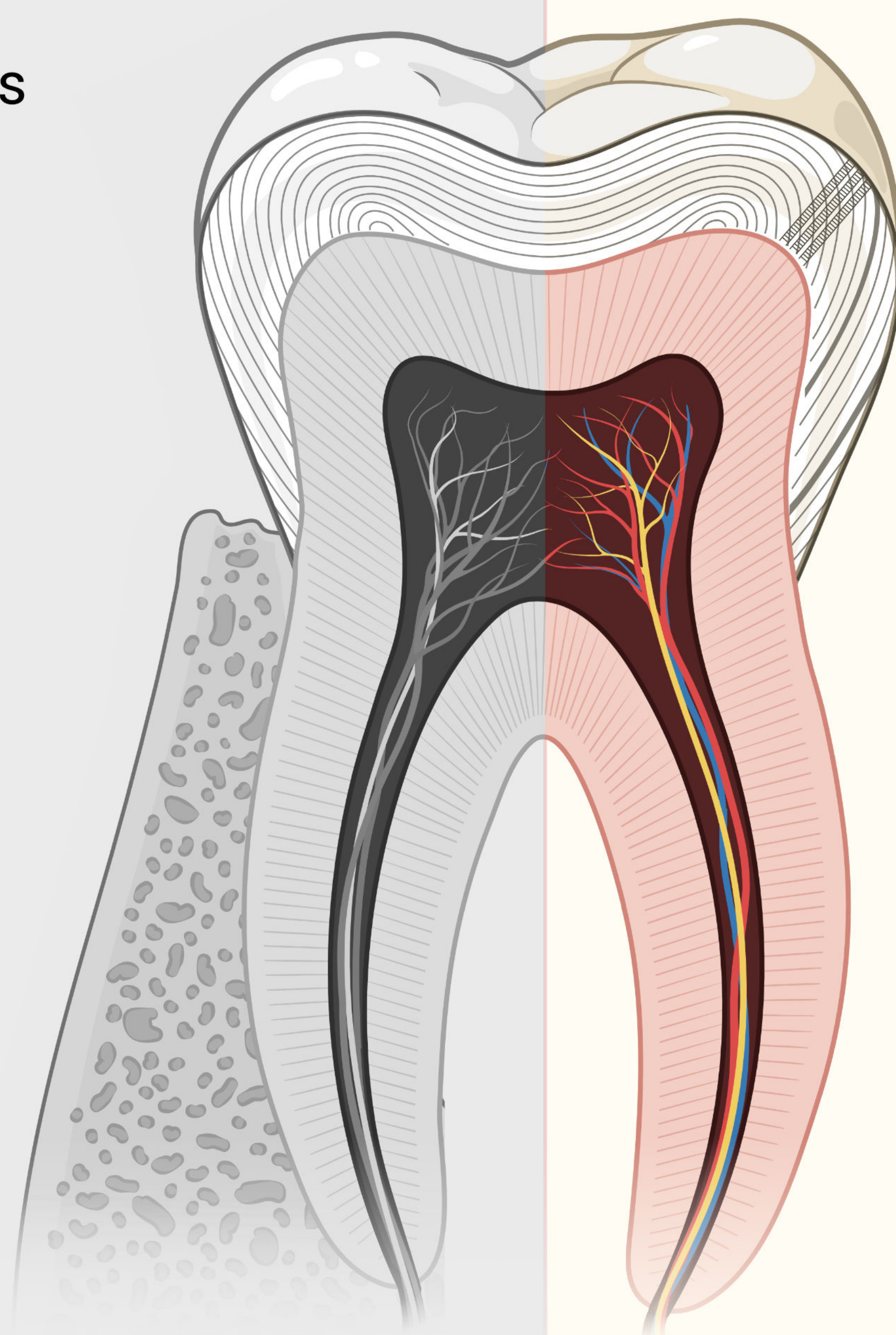


# Harvesting nature's power to treat tooth decay

*Use of biostimulants to reliably, specifically and promptly regenerate pulp and dentin tissue*

## Dentin and pulp loss

- Traumatic injuries
- Carious disease
- Bacterial infections
- Aging



## Mutanobactin-D

- Biologically compatible
- Increases tissue viability
- Stimulates stem cells
- Regenerative potential

Team: Argyro Lamprou, Moira Borens, Alina Astourian, Ira Welz

Contact: [argyro.lamprou@zzm.uzh.ch](mailto:argyro.lamprou@zzm.uzh.ch)





Voviva

# Care more. Type less.



Transcribe your  
interactions  
automatically



Fully focus on your  
patient instead of  
your computer



Never miss  
important  
details



Fill out  
documents in  
seconds

Team: Darius Doongaji, André Emmenegger, Andreea Stanescu, Emay Ouyang, Tobias Leuthold

Contact: [leutholdtobias@gmail.com](mailto:leutholdtobias@gmail.com)

**STARTUP  
CAMPUS**



TECHNOPARK  
ZÜRICH



ETH ENTREPRENEUR CLUB

Empa

Fachhochschule Graubünden  
University of Applied Sciences

hdk

OST

University of Zurich

zhaw

UNIVERSITÉ  
DE GENEVE

SWITZERLAND  
INNOVATION

University of Basel

u<sup>b</sup>

EPFL

Kanton Zürich

swisspreneur

ETH

University of St. Gallen

UZH

University of St. Gallen

TECHNOPARK  
WINTERTHUR

digital switzerland

FOUNDERS  
HIVE

EPFL

SICTIC

ETH

ETH

ETH

ETH

ETH

ETH

ETH

ETH

ETH

ETH

ETH

ETH

ETH

ETH

ETH

ETH

ETH

ETH

ETH

ETH

ETH

ETH





# The First Fully Decentralised VPN



A global marketplace for sharing and renting internet bandwidth



Got Extra Bandwidth? Get Paid 24/7  
Join the VPNXchange network and turn unused internet into real income.  
**No hassle. Full privacy. Passive earnings.**



Access the internet through a global network of decentralized VPN nodes  
With VPNXchange, your privacy stays protected — no tracking, no central control  
**Fast. Anonymous. Truly Free.**

Team: Baptiste Jacquemot, Enea Perez, Evzi Idrizoski, Zihan Qin

Contact: [baptiste.jacquemot@gmail.com](mailto:baptiste.jacquemot@gmail.com)

STARTUP  
CAMPUS



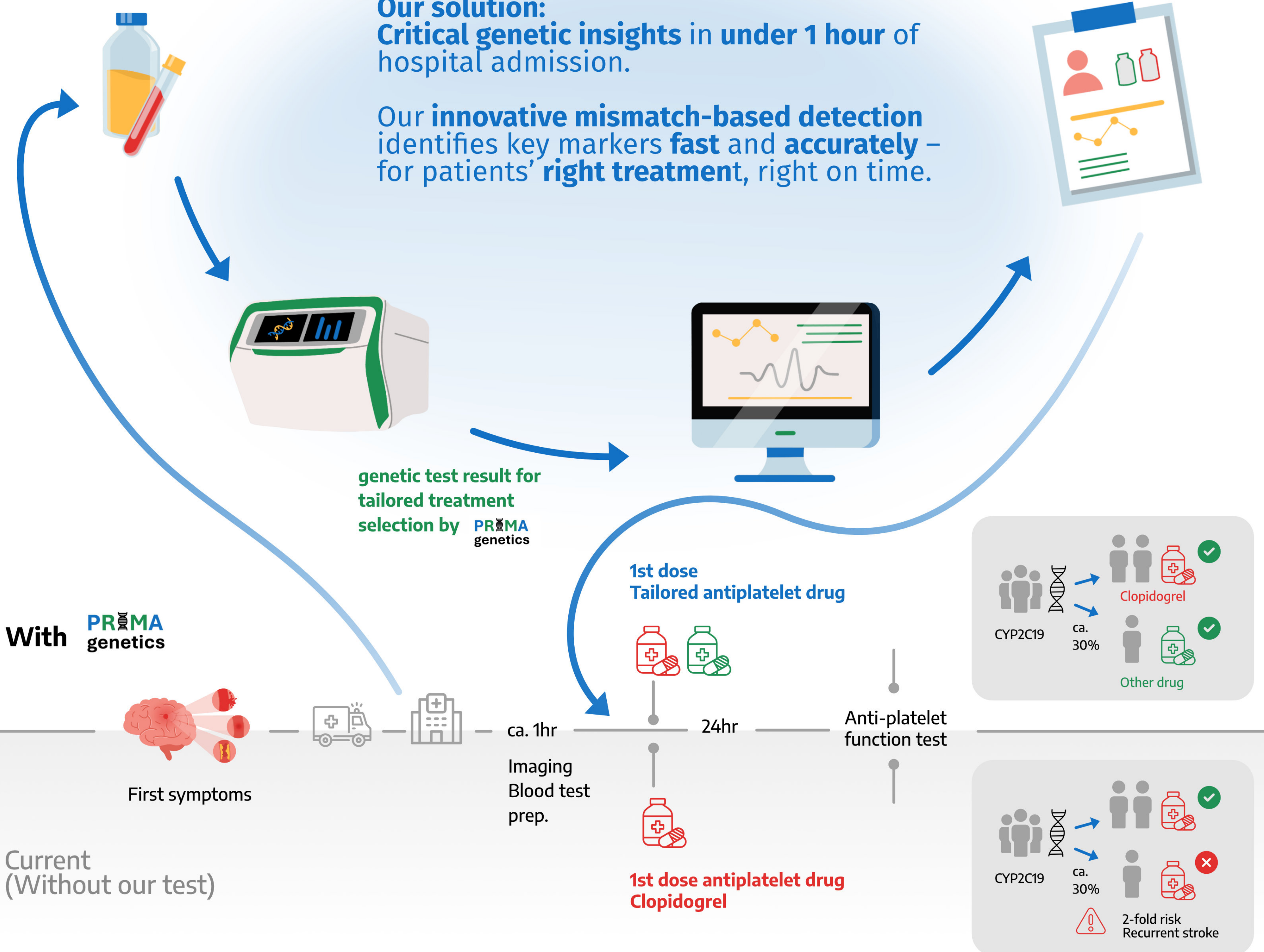


# Faster Genetic Insights, Better Emergency Care

PRIMA genetics brings **precision medicine** to the **frontline**-delivering **fast genetic insights** when **time matters most**, starting with stroke care.

**Our solution:**  
Critical genetic insights in under 1 hour of hospital admission.

Our **innovative mismatch-based detection** identifies key markers **fast** and **accurately** – for patients' **right treatment**, right on time.



**The Problem**  
Precision medicine is too slow in emergencies. Rapid genetic testing isn't available when it's most needed.

**The Immediate Need**  
Stroke is a leading killer. A common drug fails in 30% of patients due to patient genetic profile, raising the risk of recurrent strokes

**Why It Matters:** In Switzerland:  
•20K strokes/year  
•CHF 4.2 B cost  
PRIMA genetics would save CHF 63M in greater Zurich area as a start.

PRIMA genetics: **fast, accurate** and **affordable** platform can expand to cardiovascular diseases and beyond - setting a new standard in **precision medicine where it matters most.**

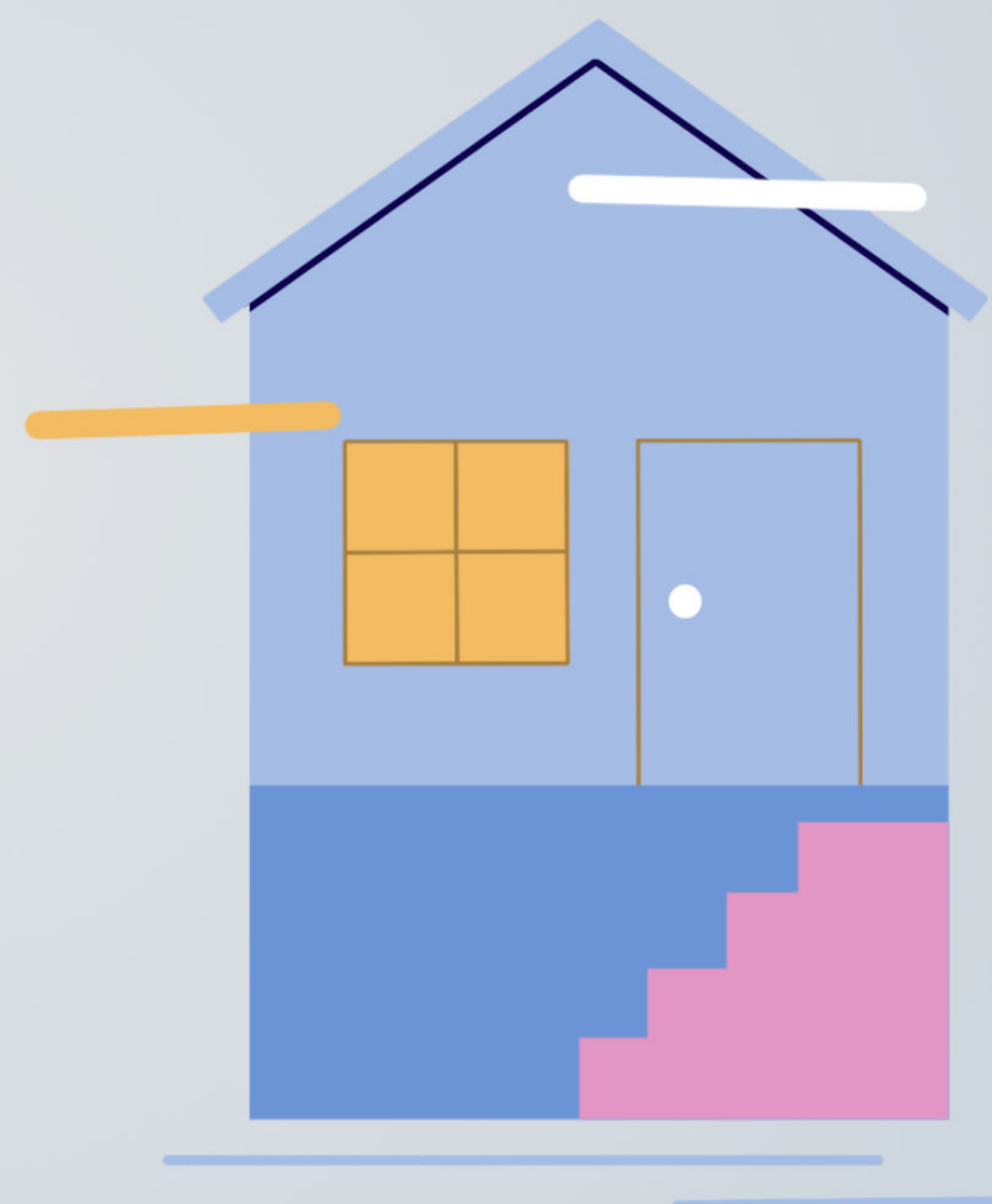
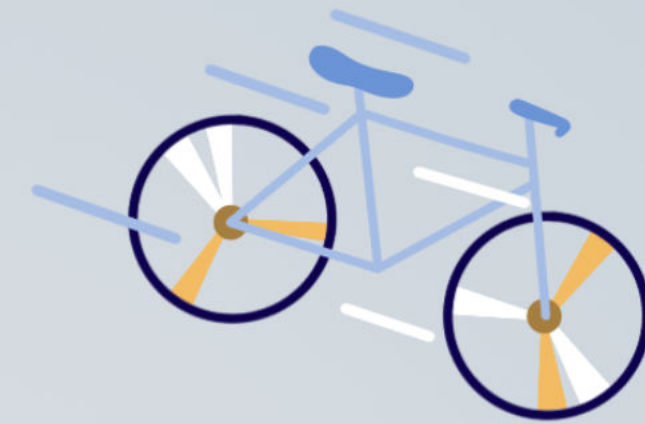
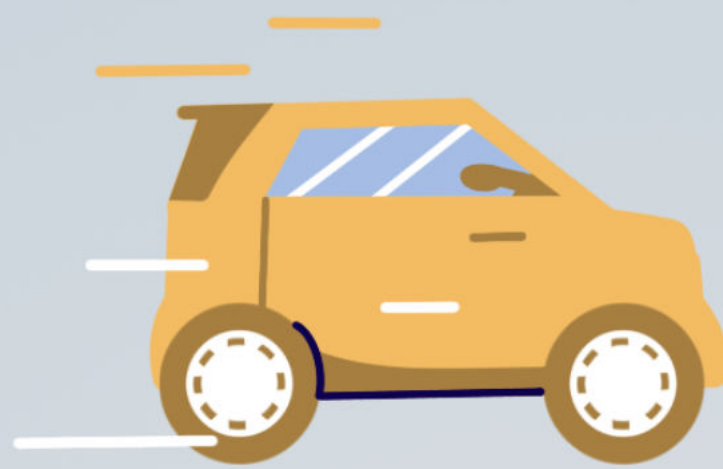
Team: Misako Yamazaki, Elvira Gordin, Megumi Mizoguchi, Alexandre Sauterel

Contact: [misako.yamazaki@uzh.ch](mailto:misako.yamazaki@uzh.ch)



# Swing

## Make your daily route pay off



fast

sustainable

cheap

Are you commuting anyway? Why not make it count? Swing connects people who travel daily with local businesses and individuals who need to send small packages. As a Swing carrier, you can earn rewards by delivering items along your regular route. - Reduce CO<sub>2</sub> emissions - Earn money during your normal commute - Join a growing network of smart, sustainable shippers - Easy app-based matching with real-time tracking - Flexible - You choose when and how often you deliver Whether you're a student, office worker, or rideshare driver - help shape the future of urban logistics.

## Swing - Logistics that move with you.

[www.swing-delivers.com](http://www.swing-delivers.com)

Team: Luise, Ping, Salman, Sid, Adnan

Contact: [adnan@swing-delivery.ch](mailto:adnan@swing-delivery.ch)

**STARTUP  
CAMPUS**

ETH Entrepreneurship Club

ETH ENTREPRENEUR CLUB

University of Zurich

SWITZERLAND INNOVATION

EPFL

ETH

University of Lausanne

TECHNOPARK

EPFL Innovation Park

ETH ENTREPRENEURSHIP

TECHNOPARK

Empa

hdk

zhaw

SWITZERLAND INNOVATION

Kanton Zürich

University of Basel

digitalswitzerland

SICTIC

University of Applied Sciences

swissnex

Switzerland

Fachhochschule Graubünden

OST

UNIVERSITÉ DE GENEVE

University of St. Gallen

swisspreneur

University of St. Gallen

FOUNDERS HIVE

HUB Zürich

Zürcher Kantonalbank

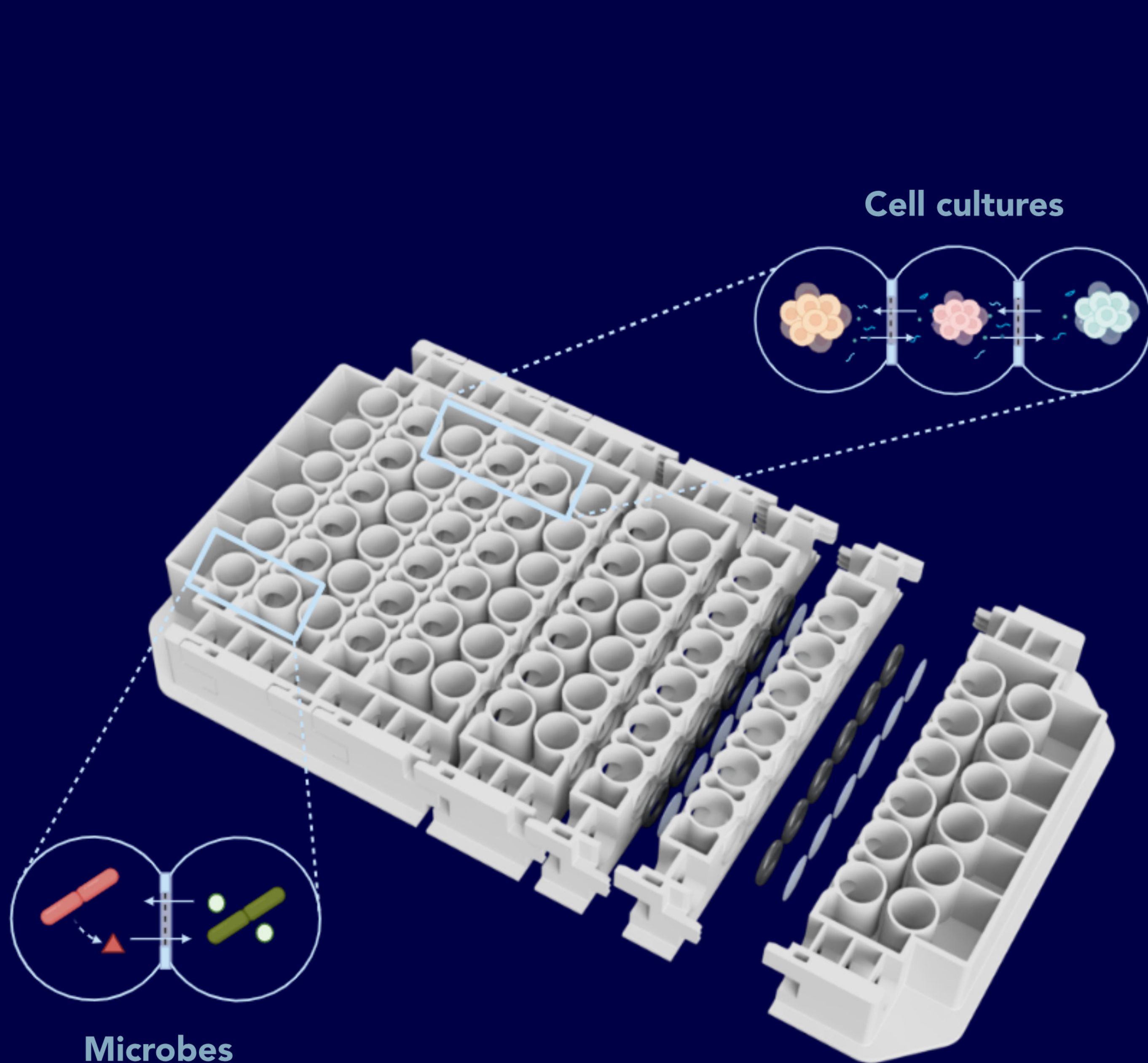




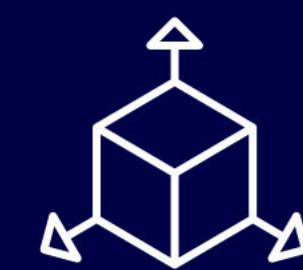
# Most efficient device for your bacterial and organoid interaction studies

Scale your discoveries with time-resolved insights — save time<sup>1</sup> and money using our standardized co-culture device

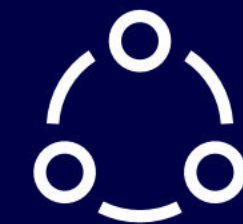
<sup>1</sup>We reduce your work time by 5x



**Evaporation protection wells to protect your samples**



**Standardized dimension allows for seamless workflow integration**



**Customizable well connections**



**Fully transparent material to measure optical density, fluorescence and bioluminescence**

## Achievements



150 plates sold



Filed patent



Tested in over 30 labs worldwide



Universität Zürich<sup>UZH</sup>

Funded by an Innovation grant and PoC from UZH

Team: Lukas Schwyter, Filippo Cuni, Safras Rawfal, Manuel Kraft, Aman Karwasra and Stephan Oehen

Contact: [lukas.schwyster@uzh.ch](mailto:lukas.schwyster@uzh.ch)



# COSMOPs

**COSMOPs** is a platform that helps robotics, automotive, and aviation companies automate the development of autonomous systems, reducing costs by up to 50-75% and minimizing safety risks.

**COSMOPs** provides to Robotics, automotive, and aviation (and any cyber-physical systems - CPS) companies with development solutions that



automate training, development, testing, and deployment of intelligent systems such as autonomous vehicles (drones, self-driving cars, etc.),



lower prices when selling the systems for their services,



allow quicker feedback loops, fast delivery of system updates to customers.



allow reduced  
development costs,  
effective testing in  
realistic scenarios, to  
avoid problems in the real  
world

**The Target is to make intelligent systems, such as autonomous vehicles, safer and more reliable than human abilities.**

Team: Sebastiano Panichella, Christian Birchler, Sajad Khatiri, Sean Thiede Youssef Farrag, Levin Tran

**Contact:spanichella@gmail.com**

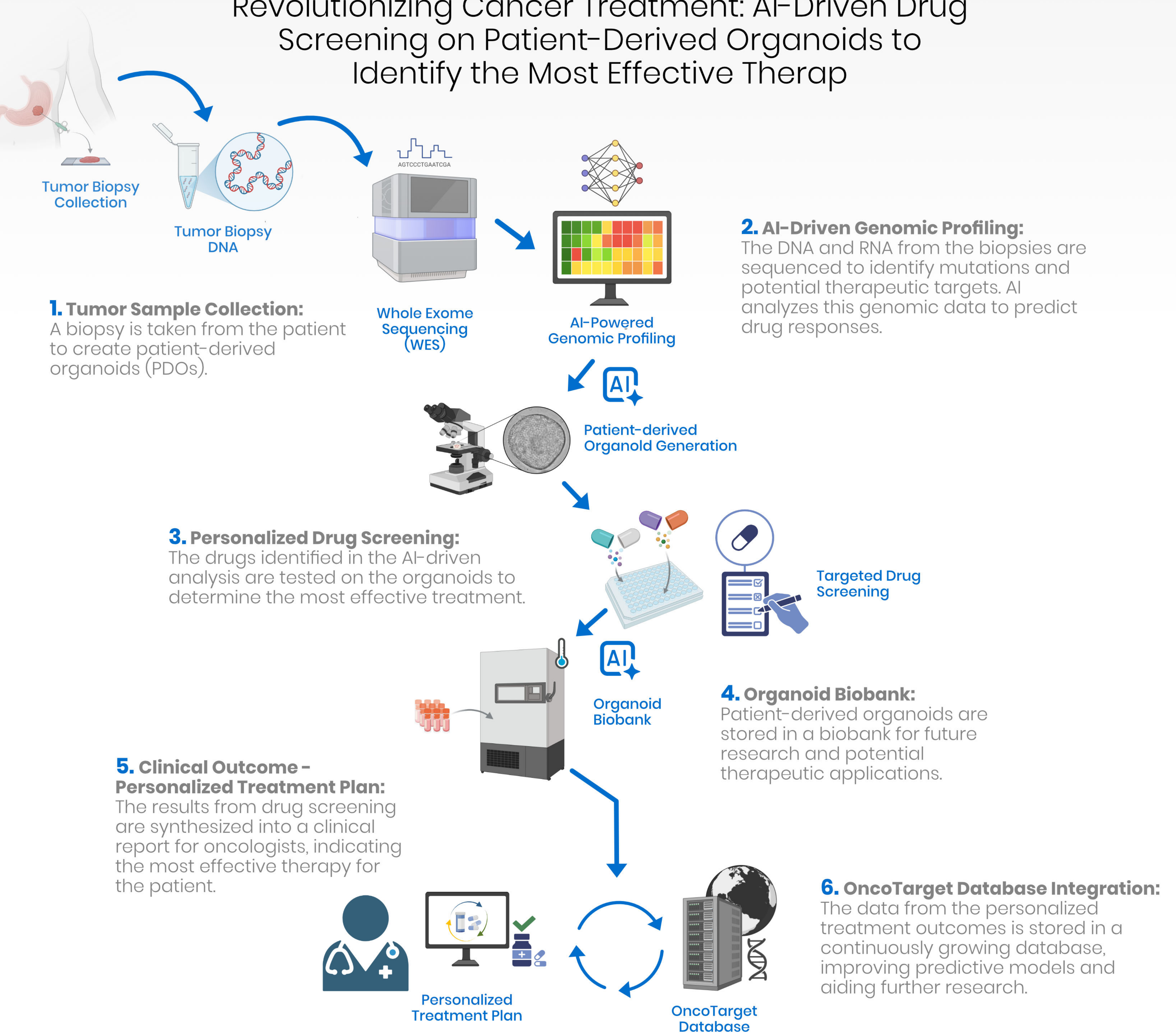
# STARTUP CAMPUS





## OncoTarget: AI-Powered Precision Oncology for Personalized Cancer Therapy

Revolutionizing Cancer Treatment: AI-Driven Drug Screening on Patient-Derived Organoids to Identify the Most Effective Therapy



**OncoTarget revolutionizes cancer treatment** by using AI-driven patient-derived organoid testing to ensure faster, more effective therapies while minimizing unnecessary treatments. The **organoid biobank** enables ongoing research and accelerates therapeutic discoveries by storing patient-specific tumor models for future testing.

Team: Giovanni Papa, Ellinor Thelander, Kerem Can Tezcan, Francisca Stewart-Zimmermann

Contact: [papa@imcr.uzh.ch](mailto:papa@imcr.uzh.ch)



# Revolutionizing menopause care and shaping the future of women's longevity

Hebe  
Tech

AI-driven diagnostic tool for menopausal transition

An algorithm-based tool to shed light on physiological changes and to predict the onset of menopause

Our team has a unique position to see the whole health journey from presenting symptoms, to diagnosis, to treatment, to outcome and access to large volume of data

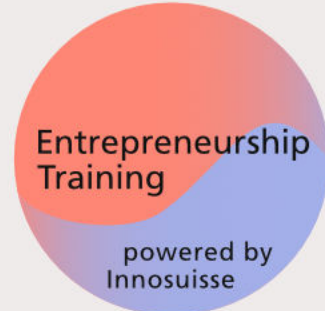
Primary health physicians do not have the knowledge or tools to help women with menopausal transition/hormonal-related issues. If the diagnosis and treatment were rightly timed in primary health care, we could change the trajectory of female health

HebeTech will revolutionize menopause care and empower women with the insights they need to take control of their health

Team: Anahita Rafiei, Anna Arima

Contact:anahita.rafieei24@gmail.com

STARTUP  
CAMPUS





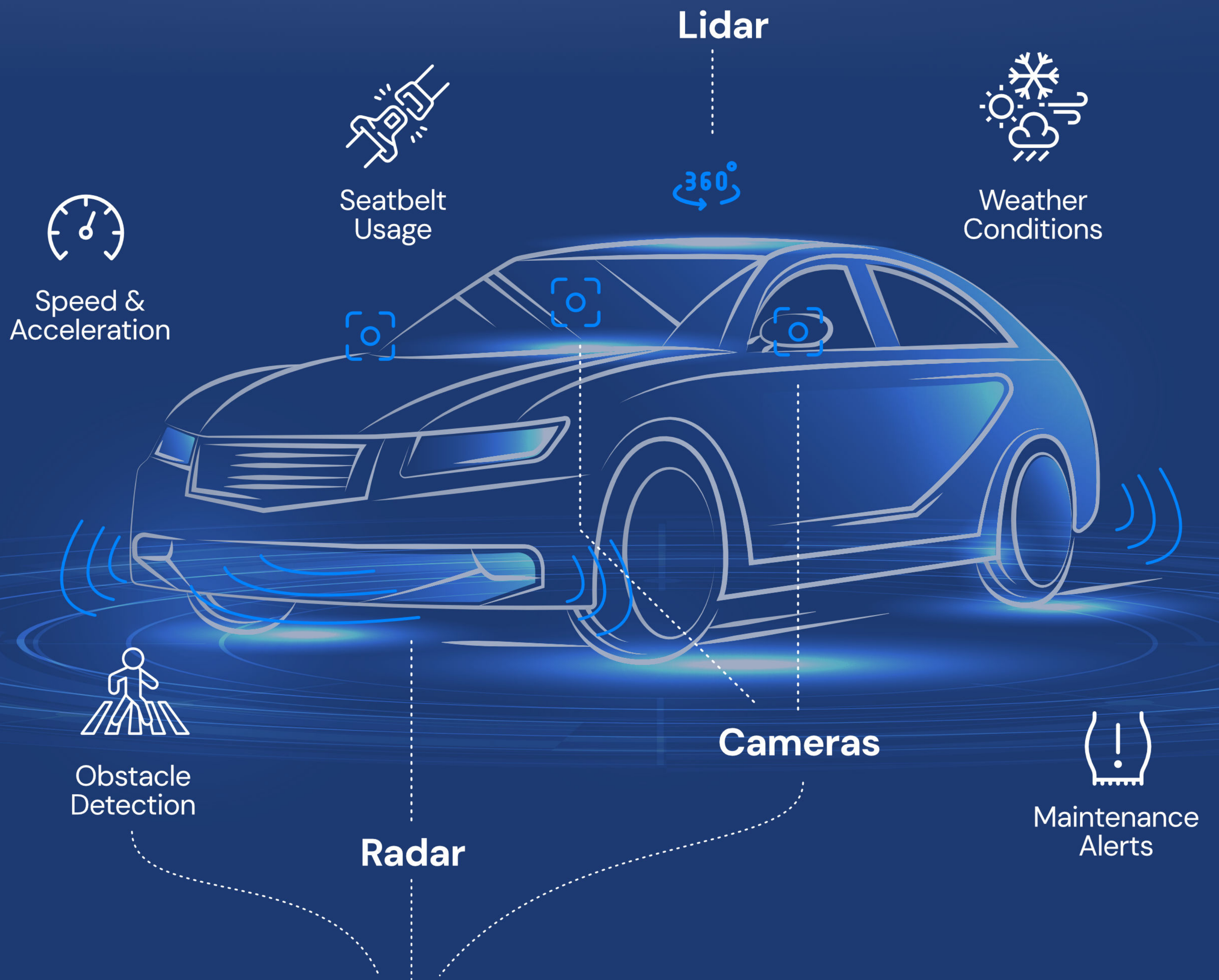
# Alpine Assess

## Build the car insurance of the future

### Problem:

Autonomous driving introduces new risks, but there isn't enough historical accident data to accurately predict them.

**Near Miss:**  
Pedestrian detected at crosswalk; emergency brake activated.  
Time to collision: <1 second.



AI-Driven Risk Assessment platform

RISK SCORE: 2,5

Insurer's Premium Calculator  
Current monthly premium: \$115

### Solution:

Analyze "near misses" (narrowly avoided accidents) and apply explainable AI models to gain deeper insights and deliver more reliable insurance solutions.

Team: Justin Meichtry, Sofia Kaminska, Xinyi Liu, Gabin Brentot, Dario Heierli

Contact: [dario.heierli@gmail.com](mailto:dario.heierli@gmail.com)

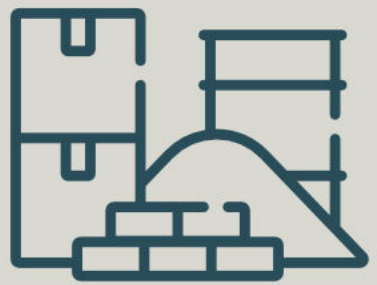
STARTUP  
CAMPUS





# Accelerating Circular Construction

Reusing building materials: faster, cheaper, and more sustainable



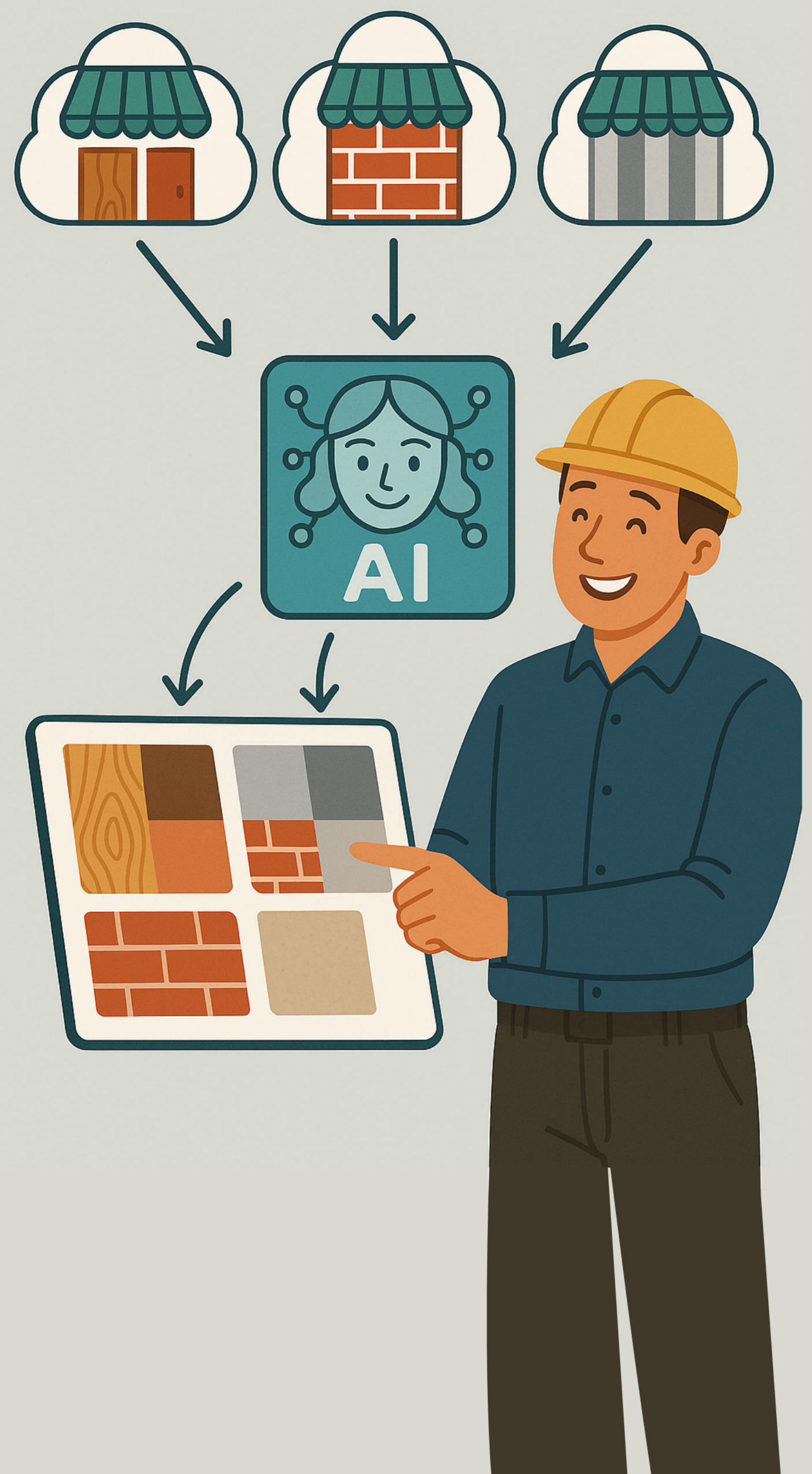
Annually, about 75,000 tons of reusable materials worth around 40 million Swiss Francs are generated from prematurely demolished buildings.



Switzerland is enacting legislation to promote eco-friendly and recycled building materials, requiring buildings to be dismantled for material reuse, thus supporting the circular economy and reducing environmental impact.



**ReBuo aids architects and building owners by providing insights into reusable building materials from buildings to the materials from online marketplaces, streamlining the process and reducing costs, as well as CO2 emissions.**



Team: Elisa van Bochove, Kiavash Fathi, Erik Maris, Ahmetcan Yavuz

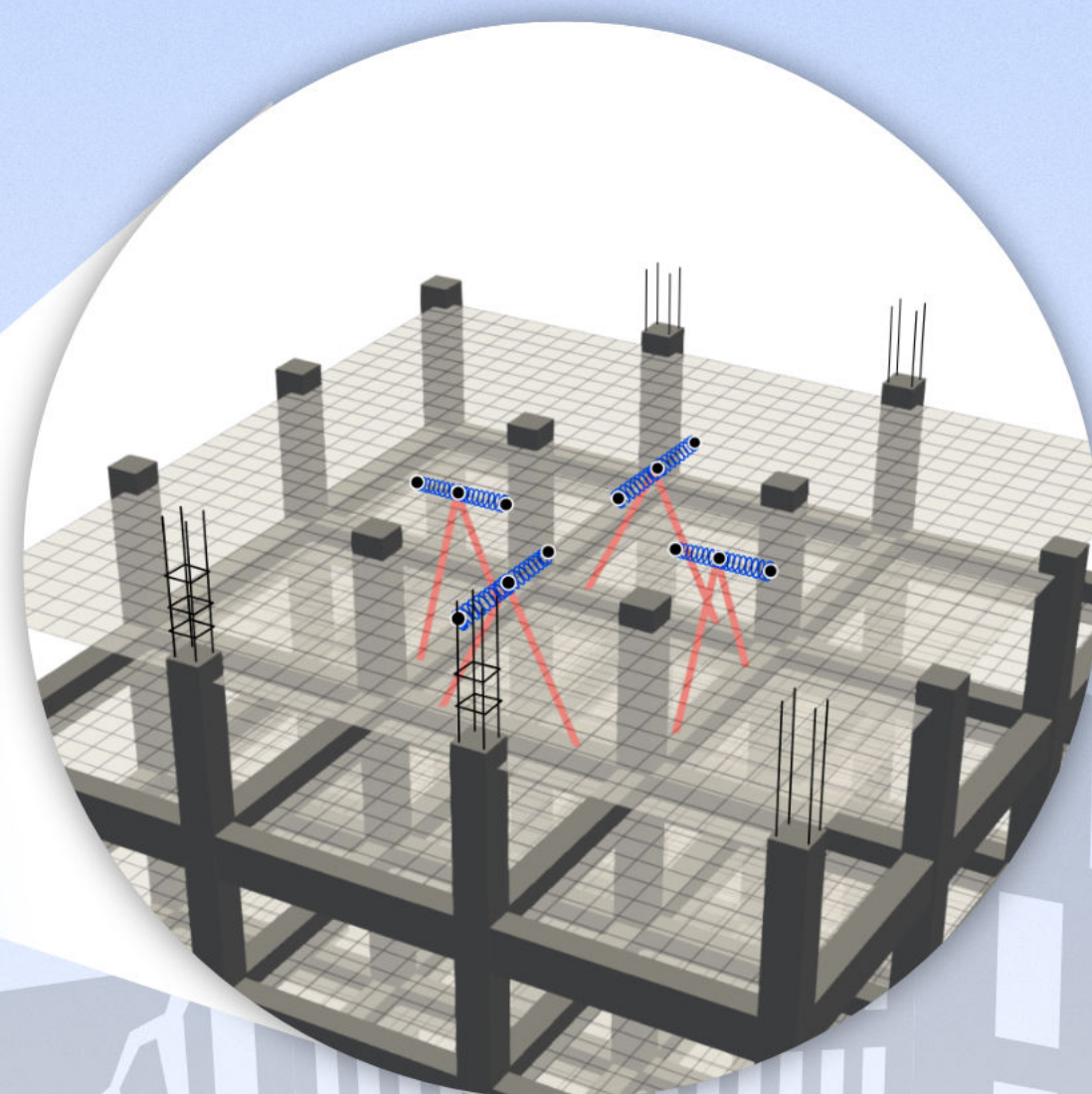
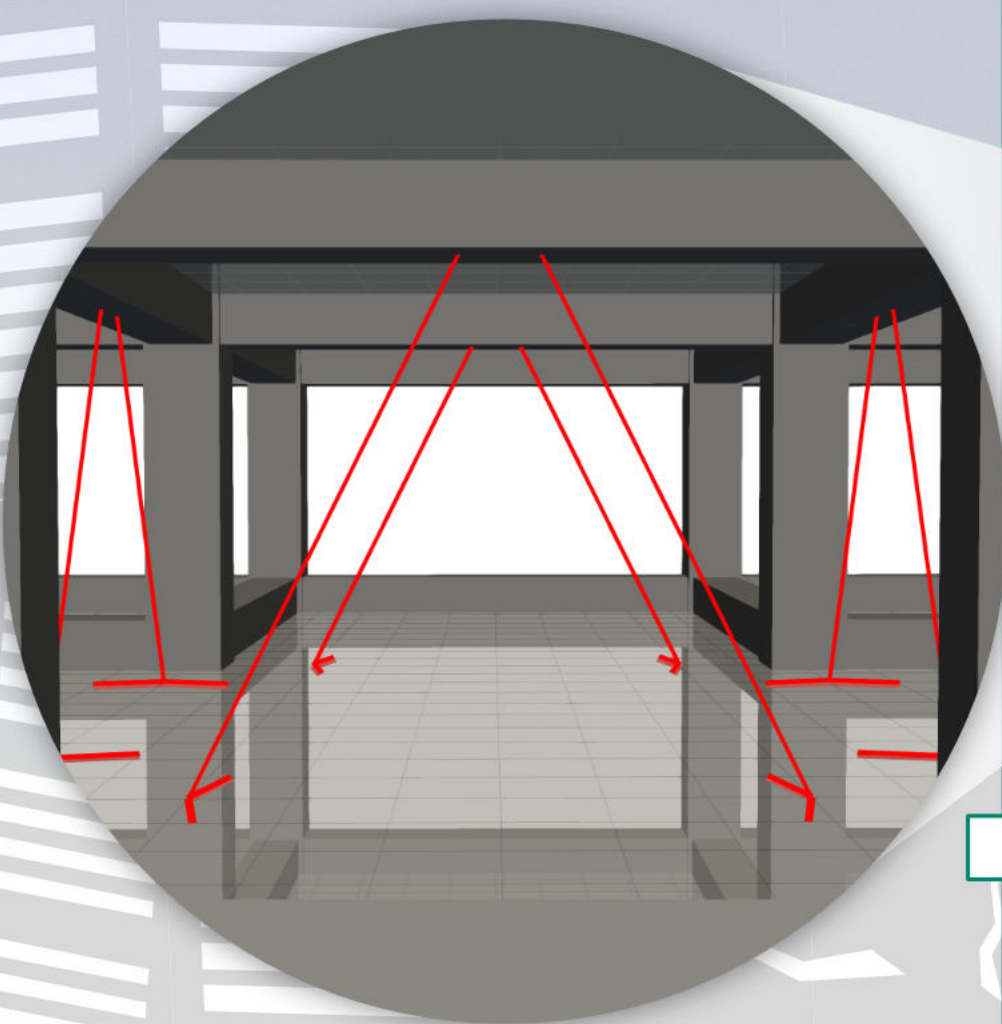
Contact: [elisa\\_van\\_bochove@hotmail.com](mailto:elisa_van_bochove@hotmail.com)



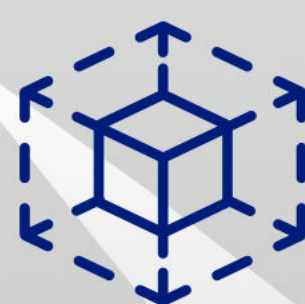
# Smart Earthquake Protection for vulnerable Buildings

**NegSV**  
(novel spring-cable technology)

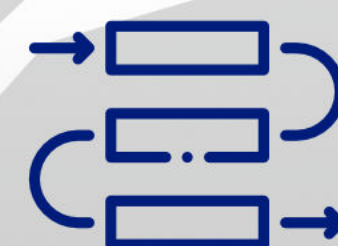
**Architectural integration**



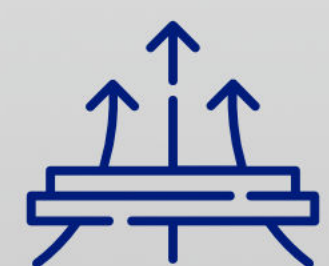
**Minimal structural intervention**



**Space efficiency**



**Easy to install**




**Enhanced comfort for the households**

**ETH STUDENT PROJECT HOUSE**

**ETH zürich**

*pioneer fellowship*

**Initial Coaching supported by**

 Schweizerische Eidgenossenschaft  
Confédération suisse  
Confederazione Svizzera  
Confederaziun svizra  
Swiss Confederation  
Innosuisse – Swiss Innovation Agency

Team: Kyriakos A. Chondrogiannis, Mikolaj Romanczyk, Laurence Cserepy, Jeremy Schäfli, Giuseppe Nappi

Contact: Chondrogiannis@ibk.baug.ethz.ch

**STARTUP CAMPUS**



**Entrepreneurship Training**  
powered by Innosuisse



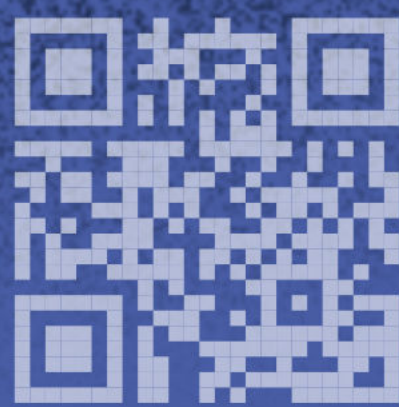
# AI is transforming deliveries



Make the last **fifty** meters to the customer your business

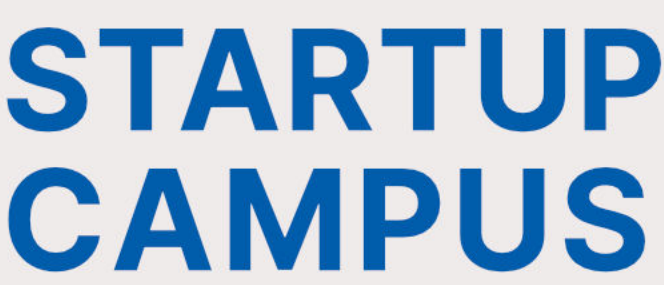
Safe and fast guidance from parking to door

Take the next step with us at lastfifty.ai.



Team: Jason Armitage

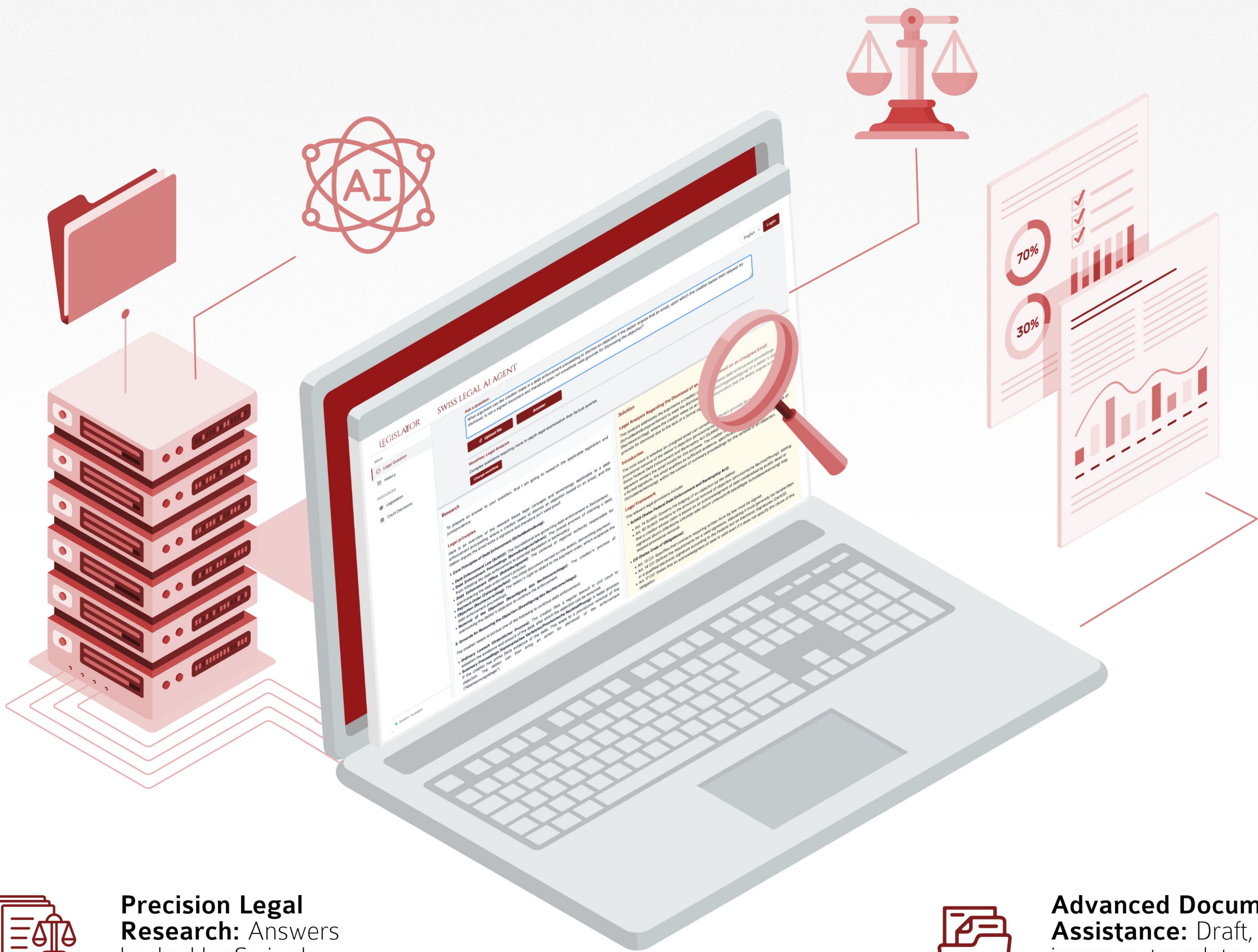
Contact: [hello@lastfifty.ai](mailto:hello@lastfifty.ai)



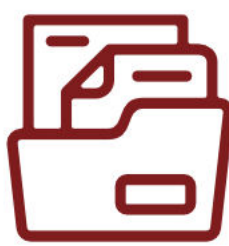


# LEGISLATOR SWISS LEGAL AI AGENT

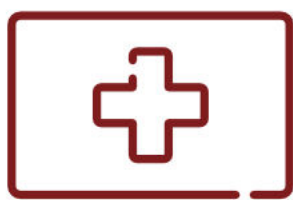
AI Agent that automates legal workflows so lawyers can focus on high-impact work



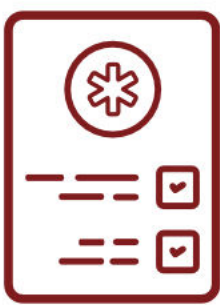
**Precision Legal Research:** Answers backed by Swiss law and 200,000+ court decisions.



**Advanced Document Assistance:** Draft, improve, translate, and extract key information.



**Built for Switzerland:** Fine-tuned for 20+ tasks specific to Swiss legal practice.



**Transparent Reasoning:** Clearly traceable analysis with detailed references.

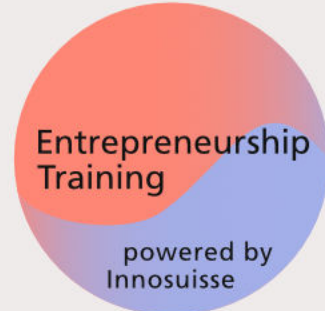


**Works in:** German, French, Italian and English.

[legislator.ch](https://legislator.ch)

Team: Ovidiu Mara, Erik Avtandilyan, Maurus Schwarz, Nassim Nasser, Daniel Pauli

Contact: [contact@legislator.ch](mailto:contact@legislator.ch)

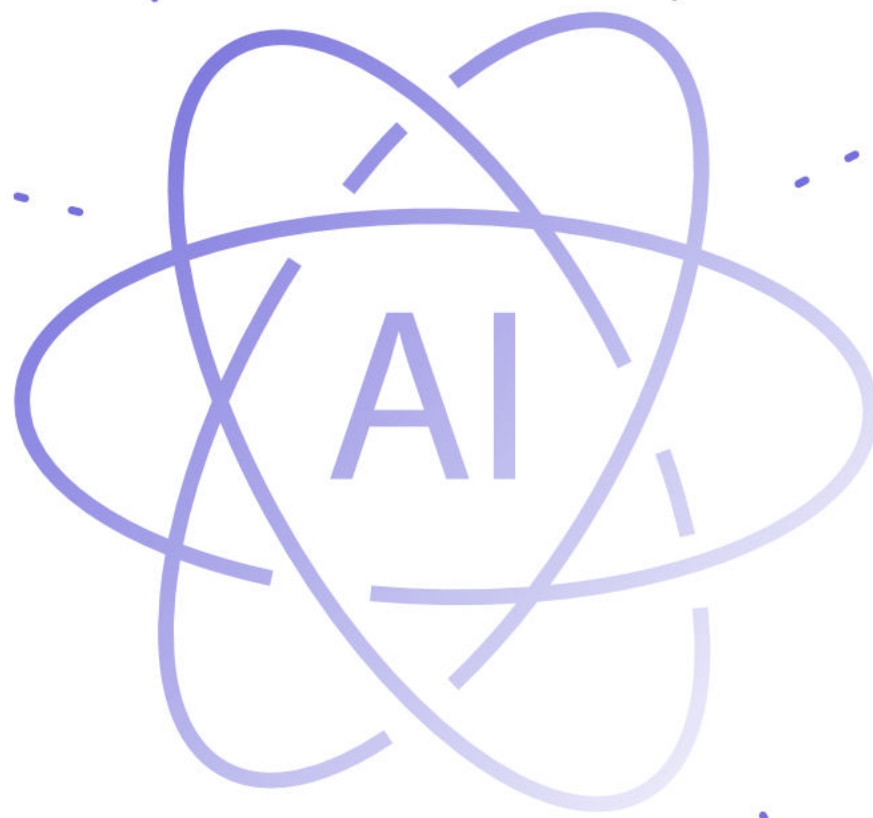






# AI Food Matchmaking: Connecting Every Guest to Their Perfect Dish

One-Third of Restaurant Customers Are  
Lost Revenue. We Transform Dietary  
Restrictions into Revenue Opportunities



Restaurant chains and  
large restaurants improve  
guest satisfaction while  
creating an inclusive dining  
experience

Eatomics unlocks revenue  
from one-third of guests  
with dietary needs who  
currently avoid restaurants  
or order less

Smart AI **matchmaking**  
**between guests and**  
**restaurants**, creating  
personalized menu offerings  
based on preferences and  
restrictions



Team: Himanshu Joshi, Andzej Gedzo, Kuzmanovic Damjan, Gonçalo Martins Enes, Carmine Cristinzio, Luca Hagenmayer

Contact: [luca@eatomics.com](mailto:luca@eatomics.com)

**STARTUP  
CAMPUS**



TECHNOPARK  
ZÜRICH



ETH ENTREPRENEUR CLUB

Empa

Fachhochschule Graubünden  
University of Applied Sciences

z

OST

University of  
Zurich

zhaw

UNIVERSITÉ  
DE GENEVE

SWITZERLAND  
INNOVATION

swisspreneur

University of St. Gallen

EPFL

ETH

University of Basel

University of  
Basel

University of St. Gallen

University of St. Gallen

TECHNOPARK  
WINTERTHUR

EPFL

EPFL

ETH

ETH

ETH

ETH

ETH

ETH

ETH

ETH

ETH

ETH

ETH

ETH

ETH

ETH

ETH

ETH

ETH

ETH

ETH

ETH

ETH

ETH

ETH

ETH

ETH

ETH

ETH

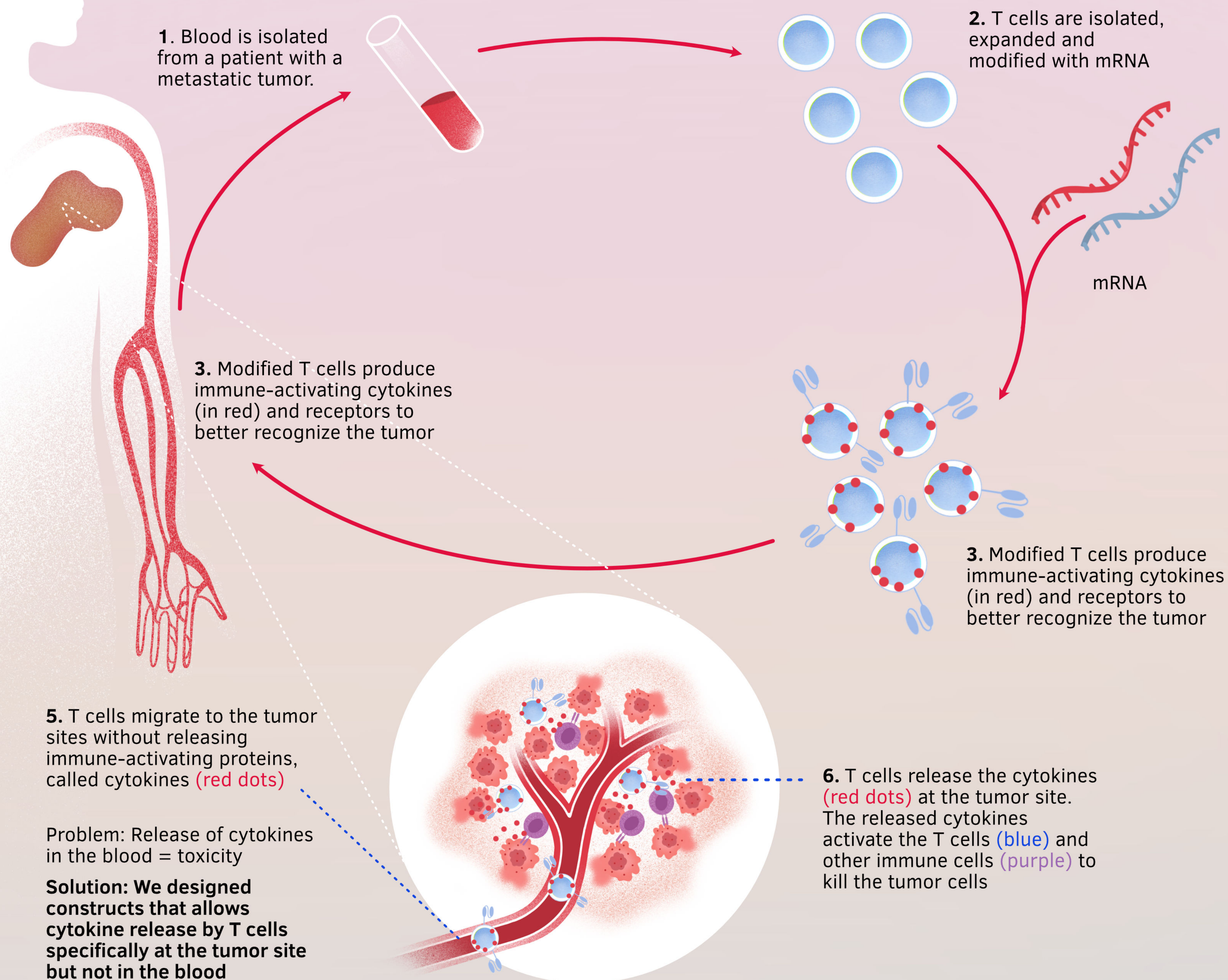




# Cytokine-armored T cells to fight tumors



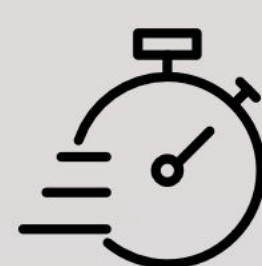
## When mRNA technology meets cell therapy



**Innovative constructs ensure safe cytokine delivery**



**mRNA technology enables rapid production**



**Short mRNA half-life reduces hospitalization costs**



**Clinical partners accelerate therapeutic implementation**

[cati-therapeutics.com](http://cati-therapeutics.com)

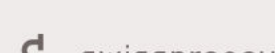
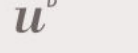
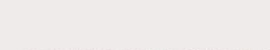
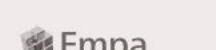
Team: Thomas Look, Safa Gharaviroudsari, Ana Sprenger, Daniel Ahmed

Contact: [thomas.look@usz.ch](mailto:thomas.look@usz.ch)

**STARTUP  
CAMPUS**



ETH ENTREPRENEUR CLUB





# Ceramic Star Particles for Skin therapies

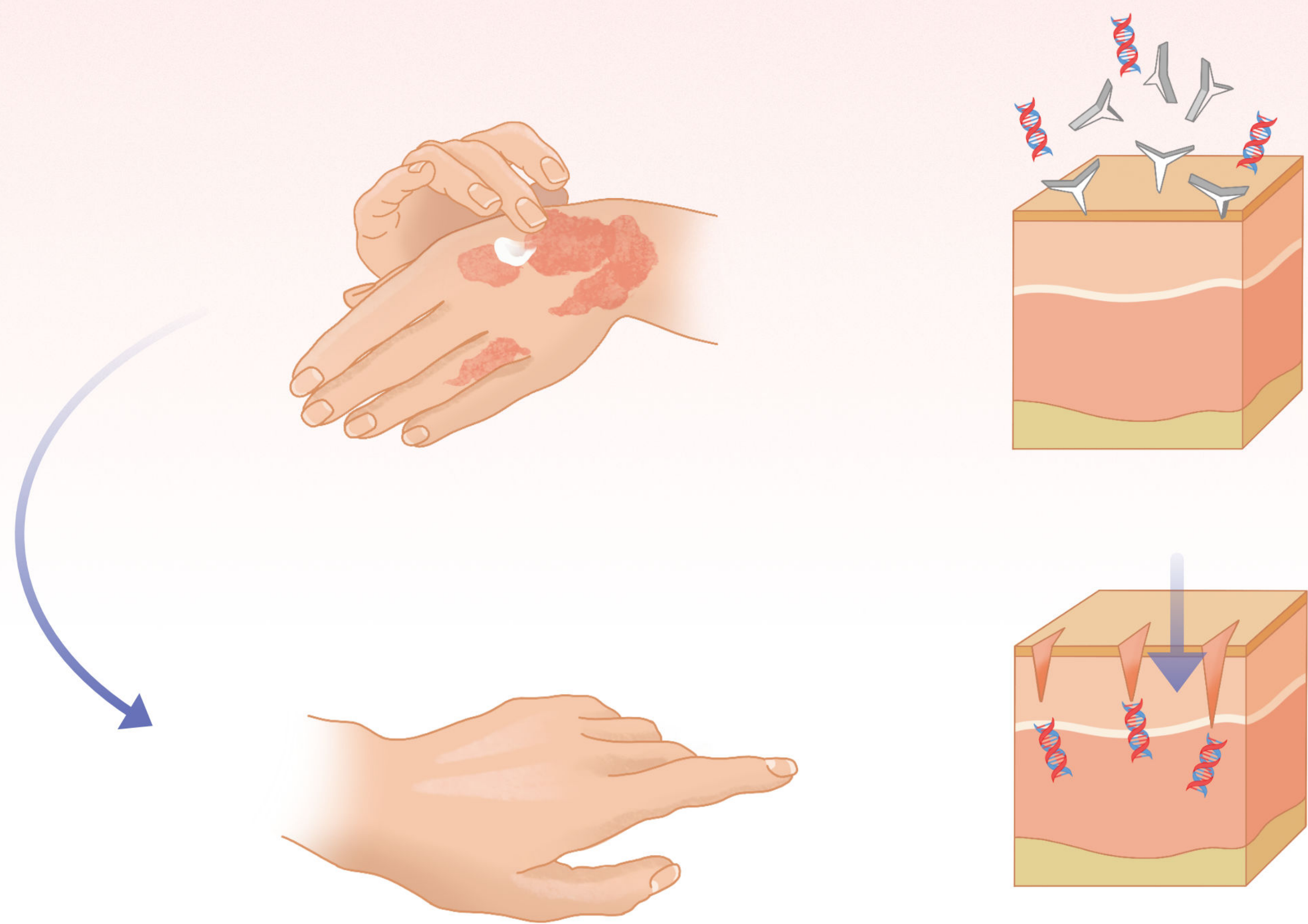
We help MedTech companies improving medicine efficiency for patients at low cost

## Problem

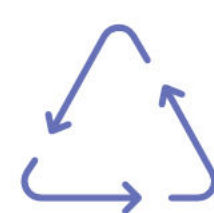
The medicine for skin affections are expensive  
The medicine cannot penetrate deep the skin (low efficiency)

## Solution

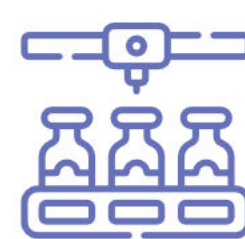
- ➔ Ceramic star particles create micropuncture (no pain for patients)
- ➔ Better diffusion of the medicine & better treatment efficiency
- ➔ Suitable for many different skin affections
- ➔ Compatible for cosmetic industry



Time-saving:  
about 15.000  
ceramic stars  
at once



Re-usable  
material



Suitable for  
mass  
production



Energy-  
saving



Low cost

Team: Romain Trihan - Laura De Vos

Contact: [romain.trihan@empa.ch](mailto:romain.trihan@empa.ch)





Educate. Elevate. Empower.



Cycle Monitoring



Pain Relief



Education

**BFF**  
Your Best Female Friend

Team: Letitia Kan, Pascal Schlegel, Sophokles Ktistakis, Alessia Russo, Marco Barnobi

Contact: [letitiawkan@gmail.com](mailto:letitiawkan@gmail.com)



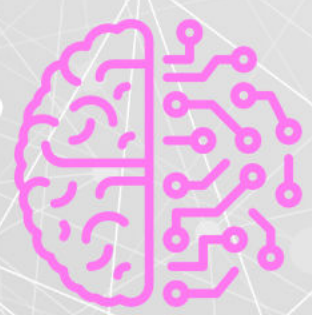


# Creating media experiences that understand you.

powered by AI and neuroscience



We create immersive media that adapts in real time to spoken input, user sentiment, and neural signals.



Real-time AI movies – your words instantly transformed into cinematic visuals.



Transform large events with adaptive, user-responsive media experiences.



Boost Market engagement with AI-driven, dynamic sentiment analysis.

[www.innately.io](http://www.innately.io)

Team: Pranav Ambhorkar, Kiomars Sharifi, Anna Mavromanoli, Daniel Lindegger

Contact: [innately.media@gmail.com](mailto:innately.media@gmail.com)

**STARTUP  
CAMPUS**







# artecho

art echo is a dynamic, creative space where bold, vibrant art inspires individuals to create, connect, collaborate and live with purpose.

support the well-being of the people in our community

make art more accessible to everyone

make art more accessible to everyone

create an environment where people can connect, create and collaborate with each other

support artists

foster creativity

## CREATE, CONNECT, COLLABORATE

[www.artecho.ch](http://www.artecho.ch)

Team: Hanna-Karina Müller, Giuseppe Giangreco, Sara Anzevino, Yige Zhang, Marianne Müller

Contact: [hannakarina@artecho.ch](mailto:hannakarina@artecho.ch)

**STARTUP CAMPUS**





# From Employee to Entrepreneur

**Mallure**  
COLLECTIVE

A Space ,to venture, to create, to connect, to collab

Join a **community of independent hair professionals** who are redefining the industry. Our **membership** provides you with **access to premium workspaces**, top-tier resources, and a thriving network—all designed to help you grow your business with ease and **take control of your career.**



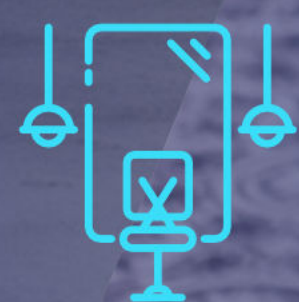
**Flexible Membership plans:** Whether you're a full-time stylist, a part-time professional, or just starting your journey into self-employment, we have a plan that fits your needs.



**Full Business support:** From marketing and training to operational support — we provide everything you need to run a successful business.



**Online Booking system:** Profit from a Online Booking system, tailored to your working hours.



**Premium Workspace:** Our modern, fully equipped spaces are designed to make both you and your clients feel at home.



**Exclusive Products:** Bring your own trusted products or take advantage of our key partner suppliers, who provide top-quality essentials to support your craft.

Team: Lilla Schmid, Diego Costa, Demir Dumaz

Contact: [schmilil@students.zhaw.ch](mailto:schmilil@students.zhaw.ch)

**STARTUP  
CAMPUS**



TECHNOPARK  
ZÜRICH

Empa  
Material Science and Technology

hdk  
Zürcher Hochschule der Künste  
Applied University of the Arts

zhaw

SWITZERLAND  
INNOVATION  
PARK ZÜRICH

EPFL

ETH  
Entrepreneur  
Alumni

Umi  
UMI | University of Lucerne  
HEC-Lausanne

TECHNOPARK®  
WINTERTHUR

EP  
FL  
Innovation  
Park

ETH ENTREPRENEURSHIP

SWISS  
HUB  
Switzerland

FH  
GR  
Fachhochschule Graubünden  
University of Applied Sciences

OST  
University of Applied Sciences

UNIVERSITÉ  
DE GENÈVE

u<sup>b</sup>  
University of Basel

swisspreneur

University of St. Gallen

FOUNDERS  
HIVE

HUB  
Zürich

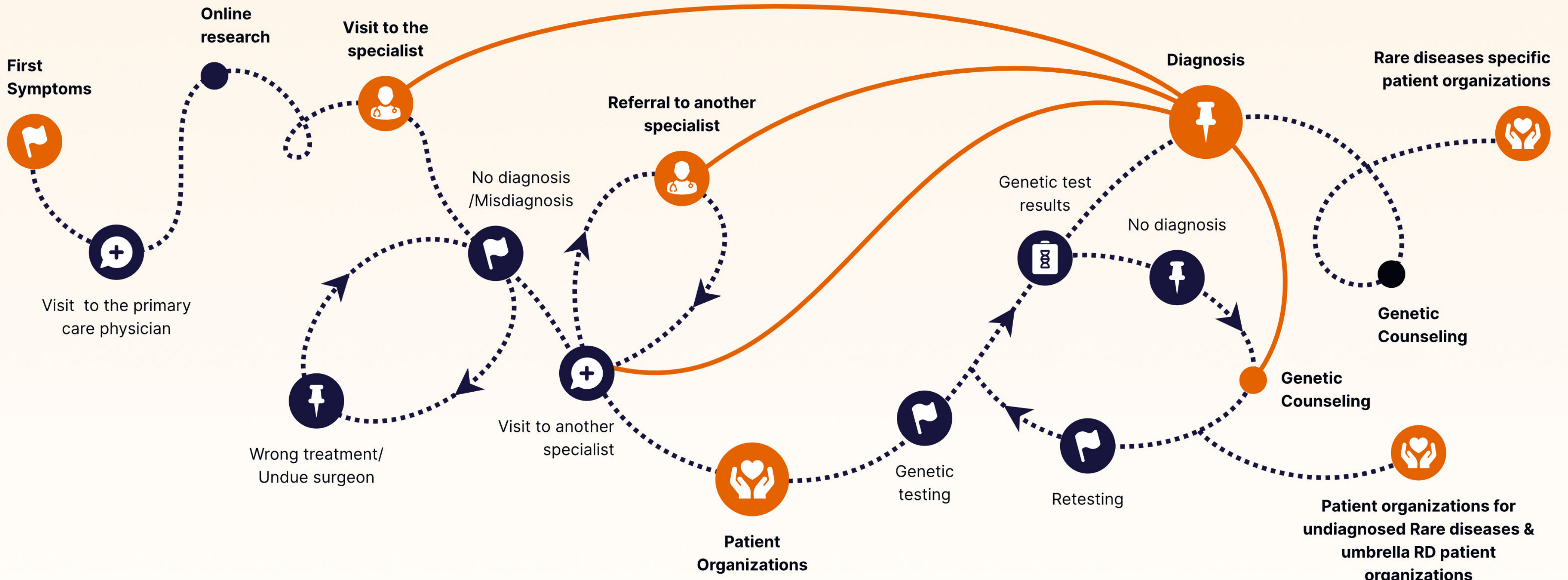
Zürcher  
Kantonalbank





# A New Era for Rare Disease Diagnosis

## Every Patient Counts



Genorare leverages **LLM, predictive analytics, and Fully Homomorphic Encryption** to deliver **fast, secure, and accurate insights** while protecting patient privacy. With **privacy at its core**, Genorare ensures full **GDPR and HIPAA compliance**, allowing seamless adoption in hospitals, research institutions, and pharmaceutical companies.

Our mission is simple: **shorten the diagnostic journey and give patients the answers they deserve—faster and more securely. Because at Genorare, every patient counts.**



### Real-Time Diagnosis Support

Our advanced **predictive intelligence** analyzes **genomic & EHR** data to assist doctors in identifying rare diseases earlier. **Privacy-First AI** – Using **FHE & blockchain**, Genorare **analyzes encrypted data without ever exposing raw patient information**, ensuring **GDPR & HIPAA** compliance.



### Seamless EHR & Genomics Integration

Works within **existing hospital** systems for automated, background analysis without disrupting workflows.



### Clinical Trial Matching

Connects **rare disease patients** with **pharma & biotech trials**, accelerating orphan drug development.



### Patient-Doctor Matching

Helps patients find specialized care faster, reducing the diagnostic odyssey. It also enables doctors to collaborate, **solving the puzzle of rare diseases** together and uncovering the right diagnosis through shared expertise.

**genorare.com**

Team: Quy Vo-Reinhard, Alessandro van Ede, Antonio Granic, Alexander Weinberger, Chenxi Jia

Contact: [quy.voreinhard@gmail.com](mailto:quy.voreinhard@gmail.com)



## Find Allergy-Friendly and Dietary-Friendly Restaurants Near You!

Making eating out easy for people with complicated food restrictions



Finding Restaurants and the Right Food for Dietary Restrictions is:

- Time-Consuming
- Stressful
- Often Leads to Social Exclusion

Whether you're traveling or exploring new places, a poor restaurant choice can lead to: – **Miserable** or – Even a **dangerous** experience

Join Us in a Movement to Bring Awareness and Help Improve People's Quality of Life with HealthBlok!

Team: Shideh, Lauren, Wolfgang, Mohamad, Hamid, Stephanie, Xenia, Jac

Contact: [shideh.heravi@aol.com](mailto:shideh.heravi@aol.com)